



formica for me



Content

2	ASIAN URBAN
14	COMFORT MODE
26	FRESH NATURE
38	SOPHISTICATED LUX
50	MORE
	<ul style="list-style-type: none">• SOLID COLOURS• PEARLESCENT• PATTERNS• FABRIC PATTERNS• 180FX™• WOOD GRAINS
58	ABOUT FORMICA
59	SUSTAINABILITY
60	PRODUCT PROPERTIES
61	TECHNICAL INFORMATION
62	OTHER PRODUCTS BY FORMICA ASIA
64	INDEX

FORMICA IS MORE THAN A LAMINATE, IT IS MY STORY

Over the past few years, Formica has always been adhering to the human-oriented design concept. From the perspective of humanity and people's lifestyle, Formica is always keeping our fingers on the pulse of residential design trends and we are committed to create comfortable, pleasant and stylish living environments.

FORMICA FOR ME collection is a creative upgrade by Formica Asia. With the concept of creation and sustainability, FORMICA FOR ME introduces advanced designs that would best suit Asian residential lifestyle. Today, we proudly present four design themes that would best fit 2017/2018 residential design trends.

It is a perfect time to create infinite possibilities with Formica.

Asian

URBAN

Through travelling and various online-to-offline influences, modern generation seek to explore things and history that connect us, physically and culturally.

It is a mind-expanding, spiritual opportunity to understand how the past influences the future.

With this increasing popularity of revisiting heritage elements from Asia, a new era of Urban is now created.





Typically, dark neutrals contrasted with wood grains exudes an urban touch to interiors.



Balanced by muted neutral old wood from Asia, the classic saturated red delivers a sense of calming and invigorating feel while creating a strong flavour of history.

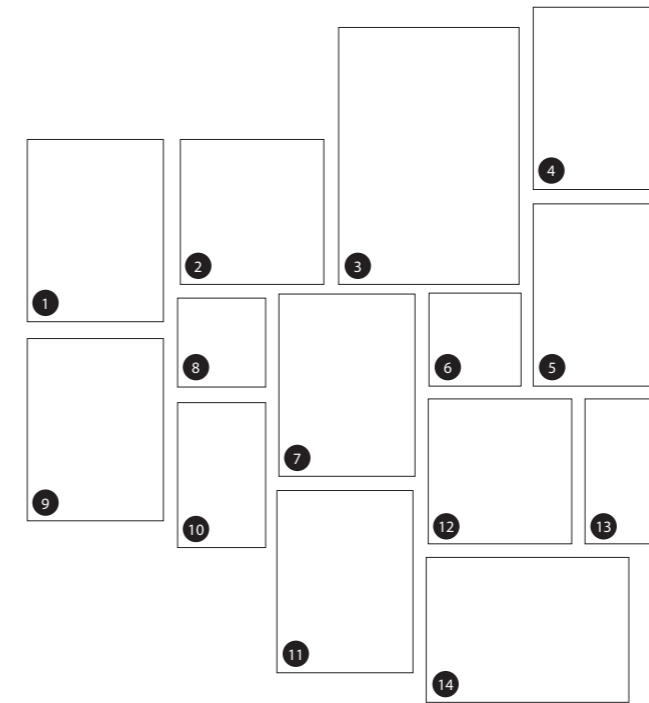


Embracing elements from the past such as cement and aged metal, the urban uniforms of dark wood grains are now given a fresh vitality.



COLOUR

M A P P I N G



- | | | |
|------|---------------|--------------------|
| (1) | 6410NT | Weathered Beamwood |
| (2) | 9439D8 | Brown Blackwood |
| (3) | 9436D8 | Dry Blackwood |
| (4) | 0813NT | Cuban Wood |
| (5) | 9524LM | Indigo Raw Silk |
| (6) | 7928NM | Mouse |
| (7) | 8832HN | Elemental Corten |
| (8) | 2046NM | Beaujolois |
| (9) | 9484NT | Oxidized Beamwood |
| (10) | 0806NM | Battalon |
| (11) | 6317HN | Weathered Cement |
| (12) | 9525LM | Shadow Raw Silk |
| (13) | 9521LM | Turquoise Raw Silk |
| (14) | 0338NT | Blackened Linewood |

CONCEPT

P R E S E N T A T I O N

In the next few pages, we will be presenting some of the items identified in this chapter in a shophouse setting.

A shophouse is an architectural building type that is commonly seen in areas such as urban Southeast Asia. Shophouses are mostly two or three storeys high, with a shop on the ground floor for mercantile activity and a residence above the shop.

Highlight: Playing with the contrast of modern surfaces, we have used a unique laminate layer contour technique to create a creative feature wall, mimicking the contours of a natural landscape, at the dining room. Through laser-cutting and the incremental variation of size between the layers, depth is created – turning the otherwise flat laminate into a 3D object.



▲
9484NT
 Oxidized
 Beamwood

▲
6317HN
 Weathered Cement

▲
9436D8
 Dry Blackwood



6410NT
Weathered Beamwood

8832HN
Elemental Corten

2046NM
Beaujolais



9524LM
Indigo Raw Silk

0806NM
Battalon

Comfort

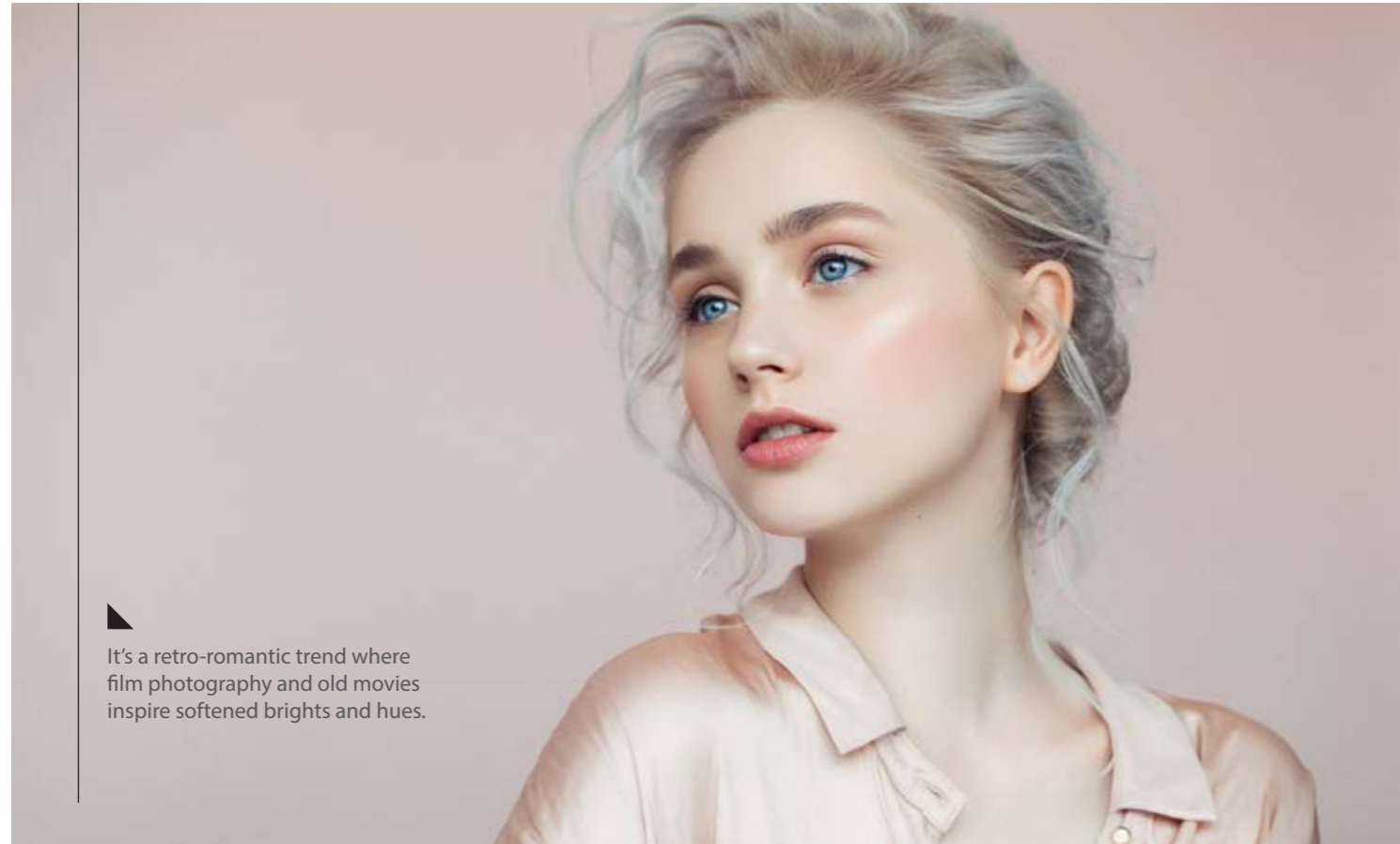
MODE

spiritual | comfort | fashion | feminine | elegant



Soft and dainty fashion, inspired by graceful ballet dancers, is a way of expression for mindfulness and contemplation.

Being in touch with yourself and the world around you helps in creating a meaningful and beautiful life.



It's a retro-romantic trend where film photography and old movies inspire softened brights and hues.



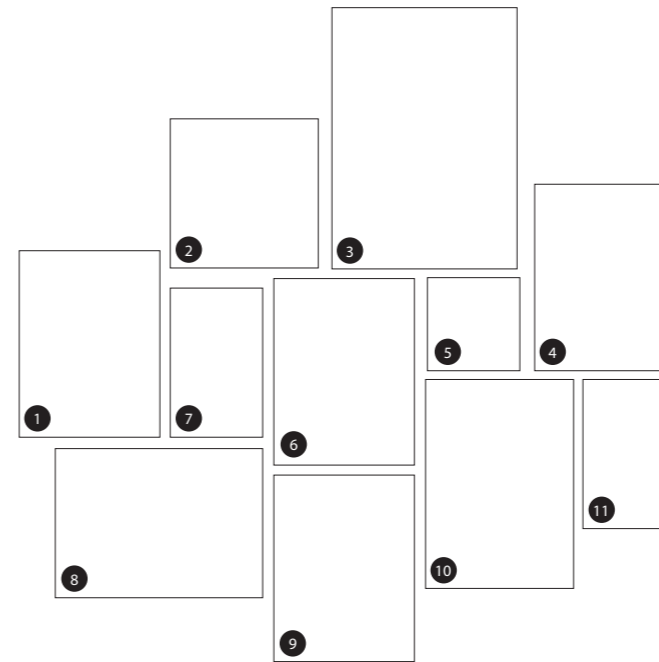
Pale tinted neutrals which often reminiscence feelings of intimacy and touch, have a restorative quality that links colour to wellbeing.



This material palette is fused with diversity; mixing the use of leather, frosted pattern and mild wood together. This style is all about creating a soft and calming fashion at home which mixes the sweet and natural.

COLOUR

M A P P I N G



- (1) **9311NM** Silver Oak Herringbone
- (2) **8006NT** Avignon Walnut
- (3) **9527CK** Iced Grey
- (4) **9528CK** Iced Blush
- (5) **9529CK** Iced Mint
- (6) **9450NT** Powdered Cherry
- (7) **7929NM** Oyster Grey
- (8) **9222NT** Grayed Maple
- (9) **8902D8** White Painted Wood
- (10) **9440NT** Nude Cherry
- (11) **9364L** Pearl Leather

CONCEPT

P R E S E N T A T I O N

In the next few pages, we will be presenting some of the items identified in this chapter in a loft apartment setting.

A loft apartment refers to large adaptable open space, often converted for residential use from former industrial buildings in urban areas.

Highlight: Mounted onto a substrate before perforating to shapes, we have freed laminates from the constraints of being merely a covering – now with the ability to create bespoke screens and ceiling; we have made the banister the center of attraction for this fashionable loft apartment.



9527CK
Iced Grey

9311NM
Silver Oak
Herringbone

8006NT
Avignon Walnut



8902D8
White Painted
Wood



8006NT
Avignon Walnut

9529CK
Iced Mint

Fresh

NATURE

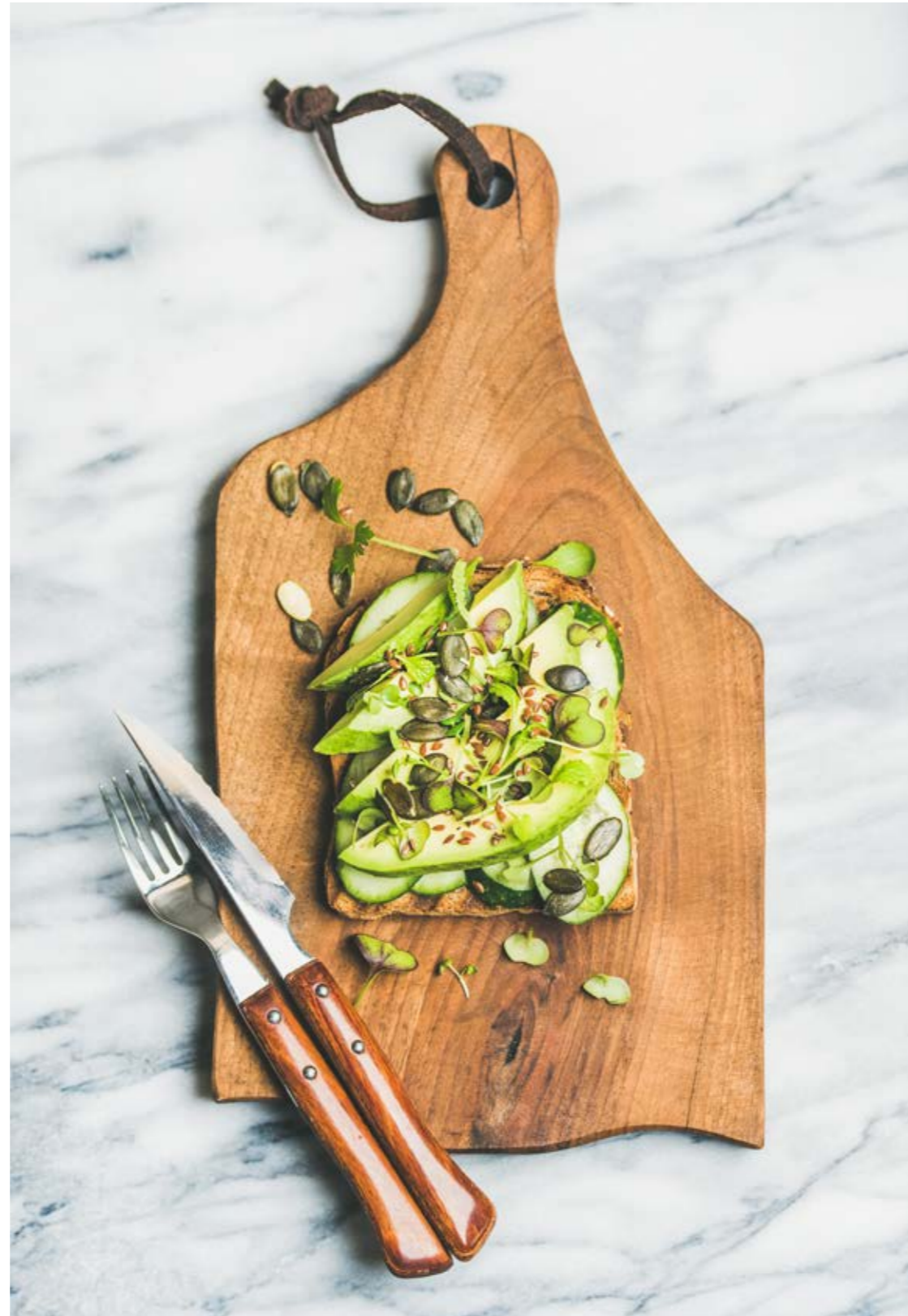


It is an undeniable truth that nature provides limitless possibilities.

It is fresh and relaxing. However, with human's creativity, it could also be iconic and playful.

It is amazing how much joy it could bring to oneself to be able to dig into a truly nature touch.

▲
 Mix and match.
 It all depends on your
 imagination. Raw wood grains
 and contemporary stones are
 not just usable, but also rich with
 characteristics details.



▲
 With textiles and natural
 wood grains as the best
 touch of nature, nature
 lovers are creating their own
 garden at home.

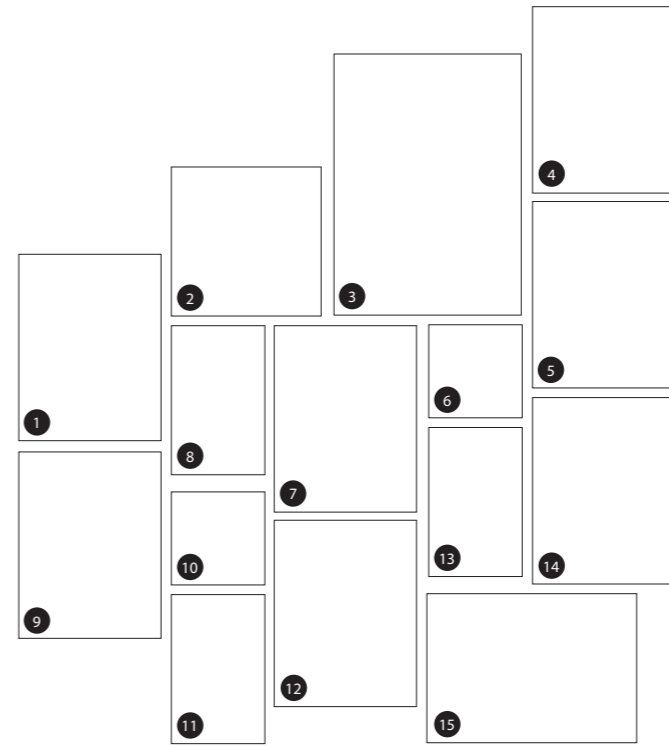


▲
 Tapping into a desire
 to experience colour
 sensation and enlightening
 encounters; bright green and
 energetic lime tones can be
 used in colour-blocking to
 reflect aspects of nature.



COLOUR

M A P P I N G



- (1) **8910NT** Raw Birchply
- (2) **9306NM** White Bardiglio
- (3) **9435D8** Raw Blackwood
- (4) **8843D8** Natural Ash
- (5) **8844D8** Aged Ash
- (6) **3200EG** Ultra White
- (7) **9310NM** White Marble Herringbone
- (8) **6445LM** Greige Textile
- (9) **8913NT** Oak Fiberwood
- (10) **8796EG** Algae
- (11) **6446LM** Charcoal Textile
- (12) **6401NT** Natural Walnut
- (13) **5341EG** Wasabi
- (14) **9437D8** Toffee Blackwood
- (15) **6402NT** Thermo Walnut

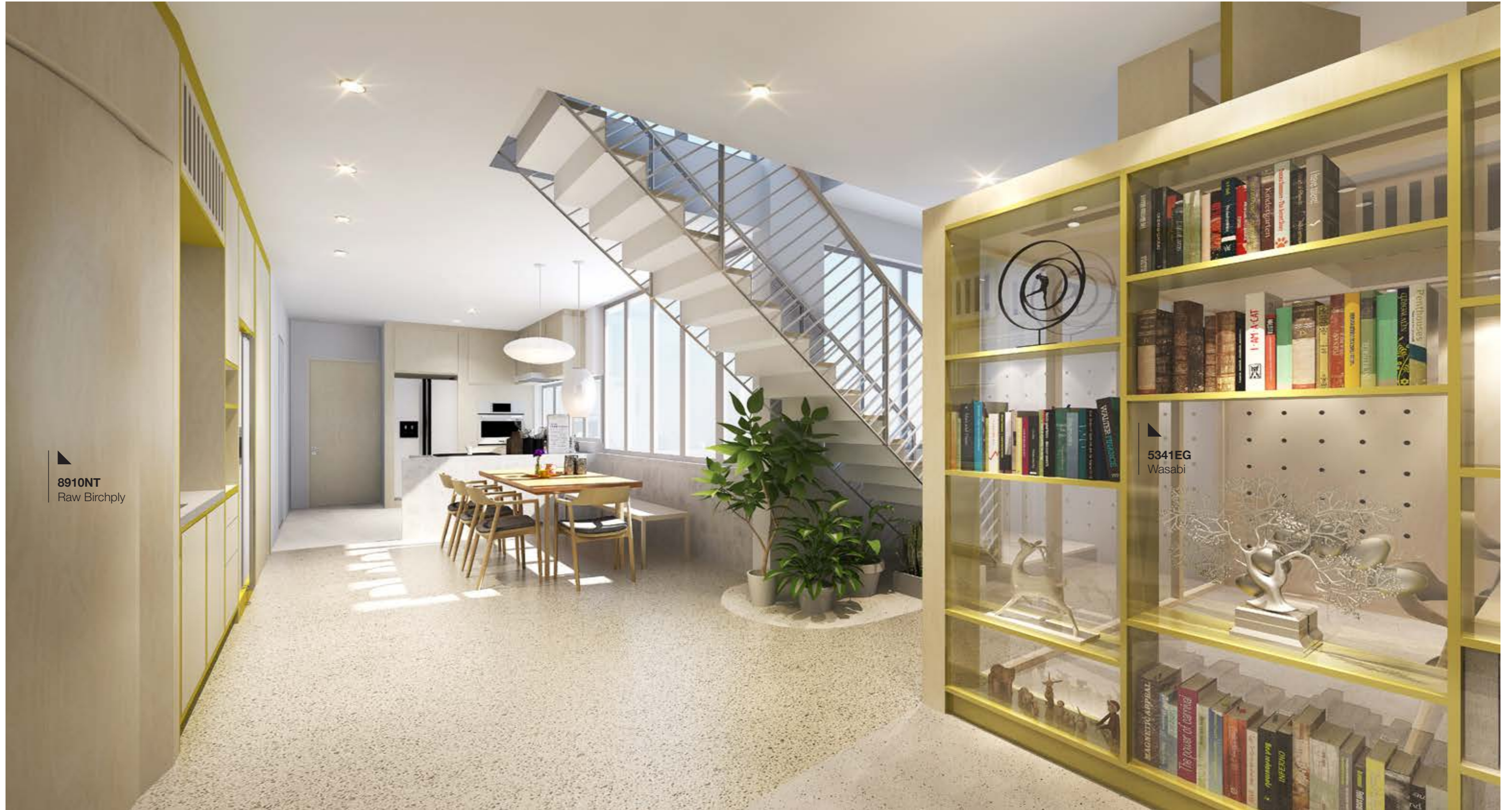
CONCEPT

P R E S E N T A T I O N

In the next few pages, we will be presenting some of the items identified in this chapter in a small apartment setting.

Highlight: For city dwellers living in small apartments, we thought that it would be nice to create a fresh and healthy space with this design concept that promotes smart usage of working and living spaces.

One of the tricks is to utilize fresh colours and embedding multi-purpose furniture that can double up as storage spaces.



8910NT
Raw Birchply

5341EG
Wasabi



9310NM
White Marble Herringbone

6445LM
Greige Textile



8796EG
Algae

8910NT
Raw Birchply

Sophisticated

LUX



There is always something particularly intriguing about designs that radiate a luxurious finish while keeping things simple.

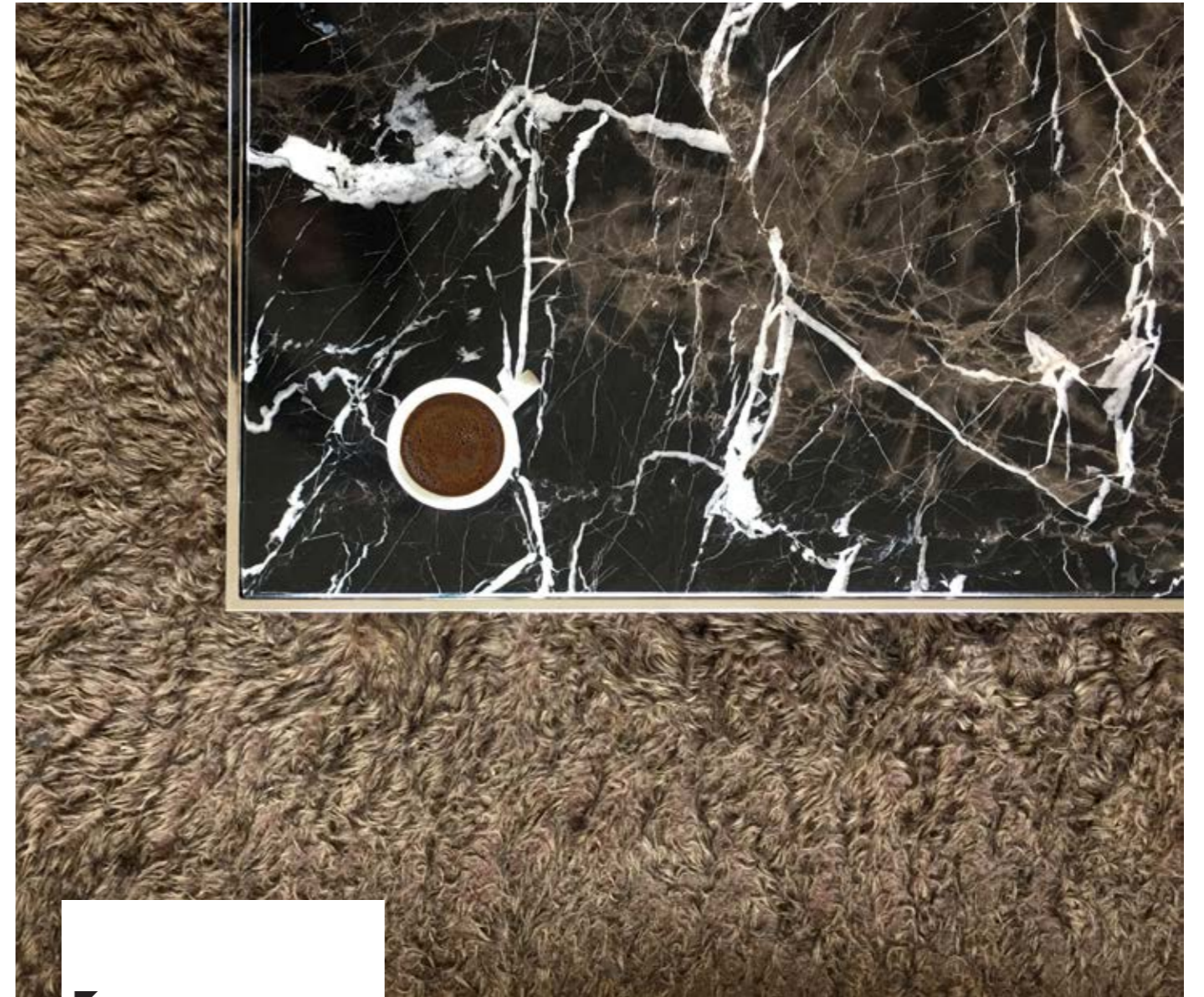
Luxurious lifestyle is not just measured by wealth; but how much you appreciate the most exquisite and artistic things in life.

luxury | high end | masculine | menswear | golden age | artistic



▲ This opulence style is a balance of dark, grayish wood grains, artistic precious stones and classic lightened menswear, to bring a more contemplative feel.

▲ Neat use of chocolate and cream as a base colours, with smoky tones of wood and textile designs, creates a luxurious touch of craftsmanship.

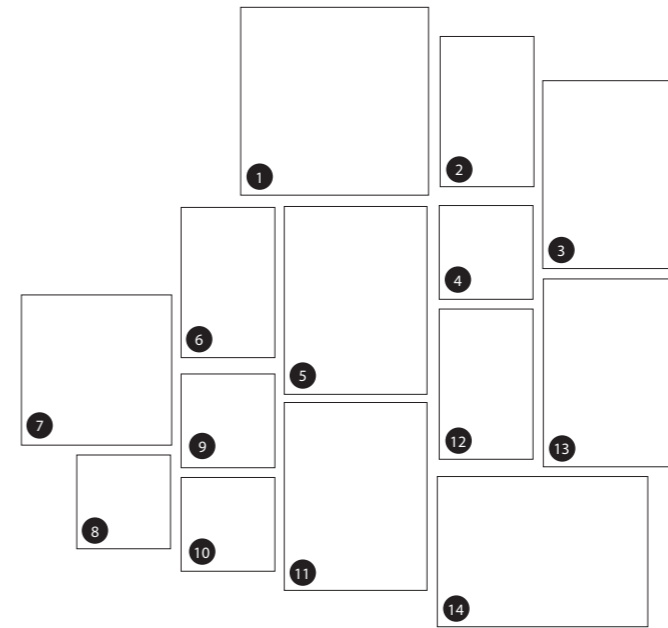


▲ Shimmery leather and brushed champagne are essential elements for the rich. Together with saturated bright yellow, it creates a big contrast with decent dark gray to bring energy to the interiors.



COLOUR

M A P P I N G



- (1) **9535LM** Flint Plaid
- (2) **8857NM** Just Gold
- (3) **9366L** Smoky Shimmer Leather
- (4) **9365L** Bronze Leather
- (5) **6320NM** Black Fusion
- (6) **8848NT** Blacken Legno
- (7) **9534LM** Flannel Plaid
- (8) **0837NM** Graphite
- (9) **8845NT** Bleached Legno
- (10) **8816SD** Frosted Champagne
- (11) **9532LM** Beige Plaid
- (12) **9451NT** Slate Cherry
- (13) **9452NT** Antiqued Cherry
- (14) **9536LM** Menswear Plaid

CONCEPT

P R E S E N T A T I O N

In the next few pages, we will be presenting some of the items identified in this chapter in a penthouse setting.

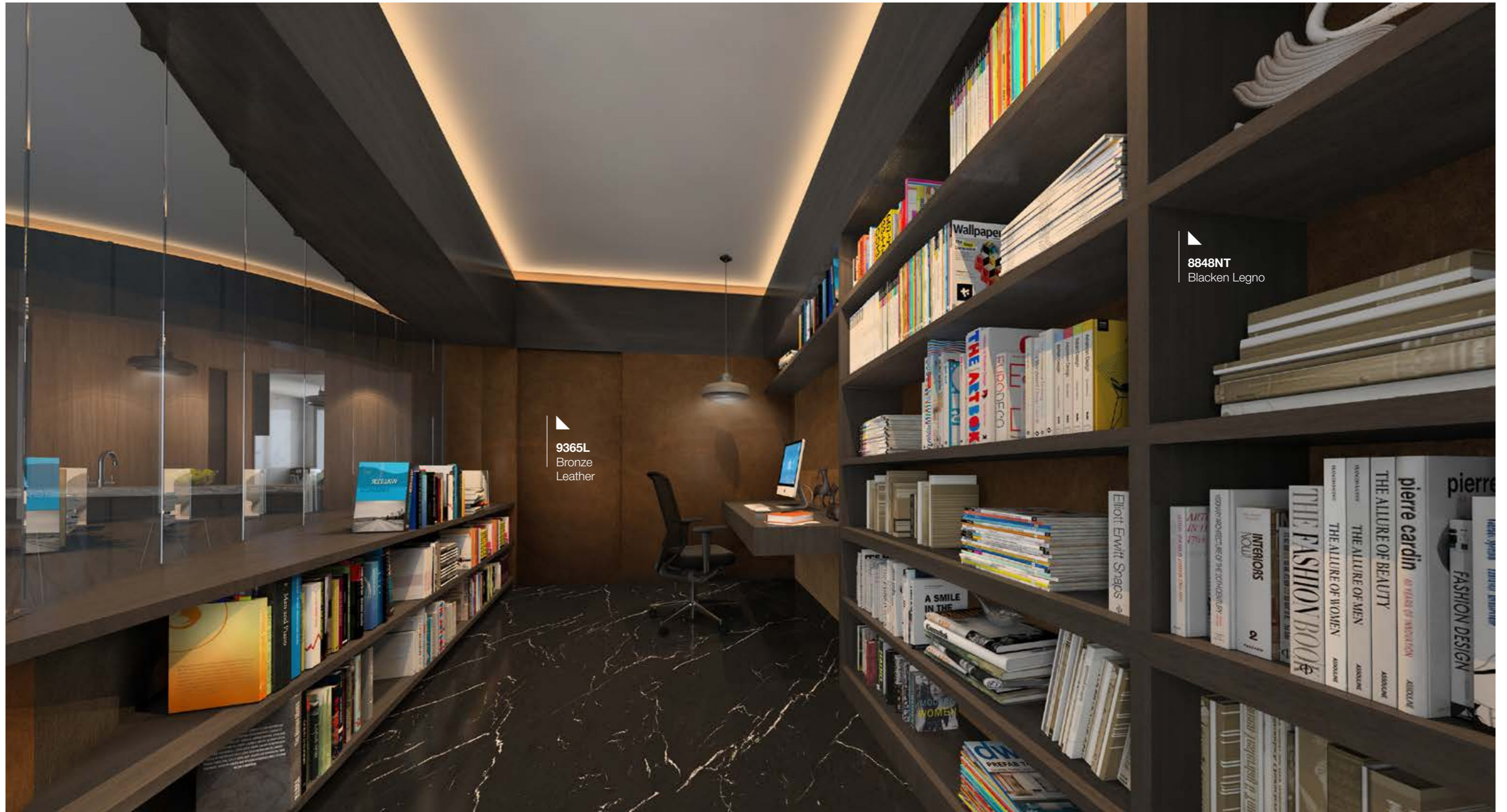
A penthouse is an apartment on the highest floor of an apartment building. Penthouse apartments are considered to be at the top of their markets, and are generally the most expensive, with expansive views, large living spaces, and top-of-the-line amenities.

Highlight: We have used a unique CNC linear cut to create an artistic feature wall that reveals layers of plywood behind our laminate surface. By varying the engraving height during the machining process, different widths and depths are created on a liner path, hence creating a pattern like water droplet.



0837NM
Graphite

9452NT
Antiqued
Cherry



9365L
Bronze
Leather

8848NT
Blacken Legno



9365L
Bronze
Leather

8845NT
Bleached Legno

6320NM
Black Fusion

9536LM
Menswear Plaid

8848NT
Blacken Legno



SOLID COLOURS ▲



3200EG
Ultra White



7929NM
Oyster Grey



2046NM
Beaujolais



8857NM
Just Gold



5341EG
Wasabi



8796EG
Algae



7928NM
Mouse

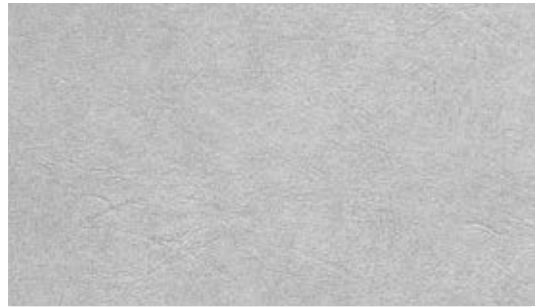


0806NM
Battalon



0837NM
Graphite

PEARLESCENT ▾



9364L
Pearl Leather



9365L
Bronze Leather



9366L
Smoky Shimmer
Leather



8816SD
Frosted Champagne



PATTERNS ▾



9527CK
Iced Grey



9529CK
Iced Mint



9528CK
Iced Blush



FABRIC PATTERNS ▾



6445LM
Greige Textile



6446LM
Charcoal Textile

E

True Match
Edgeband
available



9532LM
Beige Plaid



9534LM
Flannel Plaid



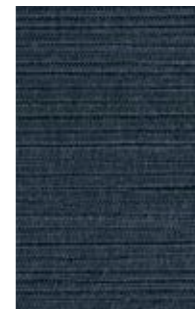
9535LM
Flint Plaid



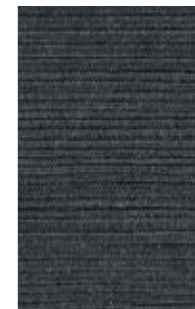
9536LM
Menswear Plaid



9521LM
Turquoise Raw Silk



9524LM
Indigo Raw Silk



9525LM
Shadow Raw Silk



9310NM
White Marble Herringbone



9311NM
Silver Oak Herringbone



9306NM
White Bardiglio



6320NM
Black Fusion



6317HN
Weathered Cement



8832HN
Elemental Corten



8902D8
White Painted Wood



9222NT
Grayed Maple



8006NT
Avignon Walnut



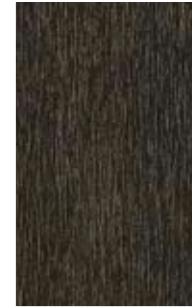
9440NT
Nude Cherry



9450NT
Powdered Cherry



9451NT
Slate Cherry



9452NT
Antiqued Cherry



True Match
Edgeband
available



Available
in 4' x 10' size



WOOD GRAINS



8843D8
Natural Ash



8844D8
Aged Ash



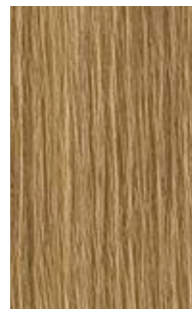
8910NT
Raw Birchply



8913NT
Oak Fiberwood



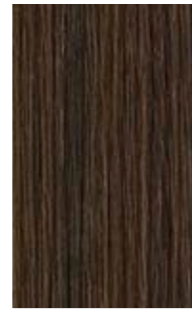
9435D8
Raw Blackwood



9437D8
Toffee
Blackwood



9436D8
Dry
Blackwood



9439D8
Brown
Blackwood



WOOD GRAINS



6401NT
Natural Walnut



6402NT
Thermo Walnut



True Match
Edgeband
available



Available
in 4' x 10' size



6410NT
Weathered Beamwood



9484NT
Oxidized
Beamwood



0813NT
Cuban Wood



8845NT
Bleached Legno



8848NT
Blacken Legno



0338NT
Blackened Linewood



About FORMICA

SINCE 1913

Formica®: Designs for today with forever in mind

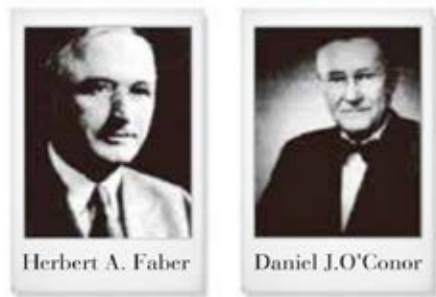
Formica's LOGO History



Formica® was founded in Cincinnati in 1913 by two young men, Herber A. Faber and Daniel O'Connor. It was intended to serve as an electrical insulator and was created as replacement for Mica, which was used for that purpose at the time. Hence the name "Formica" was chosen. World-renowned artists and architects had also begun to recognize the potential of the decorative laminates and specified them for modernist and art deco interiors.

Formica® offers a complete series of surface decorative products, including High Pressure Laminate, Compact® Grade, ColorCore®, DecoMetal®, Formica® Veneer, Formica® Custom Graphics™, and Formica® CHguard™ Series, etc. All High Pressure Laminate of Formica® conform to European BS EN438: 2008 standards. And meanwhile, we have got the certification of ISO 9001: 2008, 14001, OHSAS 18001, and GREENGUARD.

Formica® owns manufacturing bases worldwide, with four being located in Asia. Major based are located in Shanghai China, Jiujiang China, HsinChu Taiwan and Bangkok Thailand.



Formica® Corporation Founders

"As a professional word, "Formica" has been recorded in The Oxford English Dictionary, and as a replacement for decorative laminates."



O.E.D

Sustainability

Formica® Sustainability Statement

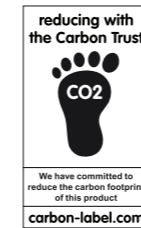
With sustainability a concern for the global community, Formica Group makes it a priority to offer architects, designers and consumers a full range of environmentally friendly surfacing products. Formica Group continually strives to create innovative products that promote a healthier environment. Find out more about how we're putting 'green' principles into practice.

GREENGUARD Certification

Formica Group has taken significant steps to ensure that its products promote a healthy indoor air quality in homes, offices, schools and other indoor environments. According to the US Environmental Protection Agency (USEPA), the most effective way to reduce indoor air pollution is to reduce or eliminate harmful chemical emissions. Formica takes pride in meeting the strict emissions limits of the GREENGUARD Environmental Institute and in achieving GREENGUARD Certification for Indoor Air Quality for Formica® Laminates. Formica® Laminates, ColorCore®, Compact® and DecoMetal® are certified in Asia according to the GREENGUARD Certification and GREENGUARD Gold Certification standards for Indoor Air Quality.



Carbon Reduction Label



Formica Group becomes the first laminate manufacturer in the world to be awarded with Carbon Trust's Carbon Reduction Label. Formica Group is demonstrating its ongoing commitment to reducing its global environmental impact by undergoing carbon footprint assessment and labelling products with the Carbon Reduction Label. Formica Group is pleased to announce that it has measured the carbon footprint for its range of High Pressure Laminates (HPL), Continuous Pressure Laminates (CPL), Compact Laminates and Bonded Worktops, which is now qualified to carry the Carbon Trust's Carbon Reduction Label.

Singapore Green Label

Formica® Laminates and Formica® Compact® Grade Laminate are Singapore Green Label certified by the Singapore Environment Council under "Made from Sustainable Materials" category.



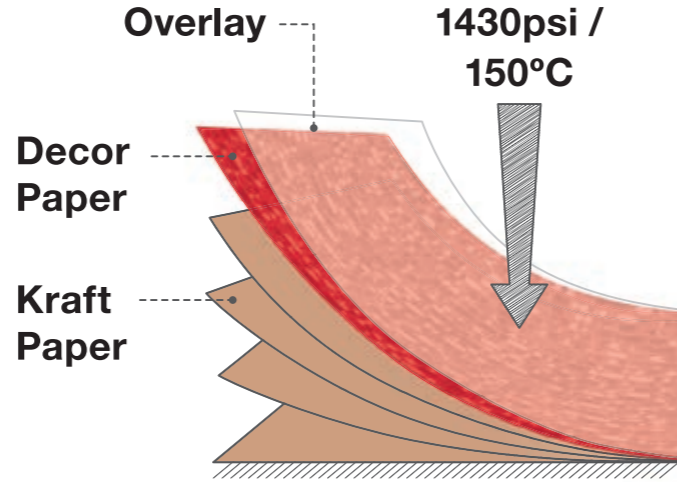
Product Properties

For durability, colour clarity and flexibility

Formica® High Pressure Laminates (HPL) are made from specially selected kraft and printed papers impregnated with thermosetting synthetic resins and fused together under heat and high-pressure in a controlled environment to form single high-density sheets of laminates.

HPL Surfaces

The surface patterns and colours on the laminates are impregnated with melamine-based resins to provide higher resistance against abrasion, shock and impact, heat, and discolouration. Select from our comprehensive range of sheet sizes and an even wider range of textures and finishes.



HPL Grades

All Formica® High Pressure Laminates are manufactured to the requirements of EN 438 and ISO 4586 and are available in many grades, each of which with specific properties. The two most commonly applied grades are General Purpose and Post-Forming:

Grade	Performance	Typical Applications
General Purpose	<ul style="list-style-type: none"> Vertical applications and horizontal applications with moderate wear General use 	<ul style="list-style-type: none"> Retail and hospitality furniture Worktops and counter tops Doors Kitchen cabinets Wardrobes Office furniture Interior walls in general transport vehicles
Post-Forming	<ul style="list-style-type: none"> Vertical applications and horizontal applications with moderate wear Can be formed with controlled temperature and bending 	<p>Where curved sections are required:</p> <ul style="list-style-type: none"> Kitchen cabinet doors Worktops and counter tops Wall-cladding Shelves Partitions

Formica® HPL Properties



Technical Information

Quality Standard according to ISO 4586:1997

(Formica® Brand Laminate: HGS)

Performance Properties	No.	Determination of Properties	Unit (Max or Min)	High Pressure Laminate Product	
				Specification Limit	Formica Typical Value
				0.8 mm	0.8 mm
Thickness	4	Variation	% Max (mm.)	+/-0.10	+/-0.10
Resistance to surface wear	6	Wear resistance	Revolution (Minimum)	≥ 350	500- 950
Resistance to immersion in boiling water	7	<ul style="list-style-type: none"> Thickness increase Mass increase Appearance 	% (max.) % (max.) Grade (Maximum level)	13.0 11.5 Slight defect	9.7 9.5 No defect
Resistance to dry heat	8	Gross appearance Other appearance	Grade (Maximum level)	Glossy change Slight defect	Slight defect No defect
Dimensional stability at elevated temp	9	Cumulative dimensional change	% (max) f-direction % (max) a-direction	0.65 1.10	0.11 0.34
Resistance to impact by large diameter ball	11	Height	Min mm	100	200-250
Resistance to cracking	13	Susceptibility	Grade (not worse than)	Slight defect	No defect
Resistance to scratching	14	Load	N (Min)	2.0	2.5-3.9
Resistance to staining	15	Appearance <ul style="list-style-type: none"> Group 1 & Group 2 Group 3 & Group 4 	Grade (not worse than)	No defect 4	No defect No defect
Resistance to cigarette burns	17	Appearance	Grade (not worse than)	Moderate defect	No defect
Resistance to steam	23	Appearance	Grade (not worse than)	Slight defect	No defect

Other Products BY FORMICA ASIA



Formica® Compact® Grade Laminates

Born for tough environments
A thick, exceptionally strong yet versatile grade of phenolic laminate manufactured through layers of impregnated Kraft paper and facing each side with décor from the Colors, Patterns or Wood Grains ranges. Suited for high-impact and high-moisture environments such as restroom partitions, lockers laboratory furniture, wall linings and counter or table tops.

Meets the requirements of EN 438 and ISO 4586 and comes in both standard grade and post-forming grade, with availability of thickness up to 25mm.



Formica® DecoMetal® Rugged Art

Combining the colour and character of real metal surfaces with the lightweight, flexible and practical nature of laminates, DecoMetal® by Formica Group is created using real metal foils over a laminate core to create stunning metallic laminates.

Simple to install and easy to maintain, DecoMetal® is a collection of highly desirable and tactile surfaces suitable for vertical applications in retail, leisure, entertainment, corporate and domestic environments.



Formica® 180fx™

Finally a laminate as real as life
Without the repetition of pattern found in conventional laminates, 180fx™ collection marks a revolution in surfacing with true-to-scale stone and rare wood patterns that offer visual drama unmatched by any other laminate, specifically created to replicate some of the world most exotic stones and rare wood species with the practical advantages of a laminate.

Pushing the boundaries of design and technology, 180fx™ collection is able to create a timeless palette versatile enough to enhance any interior space.

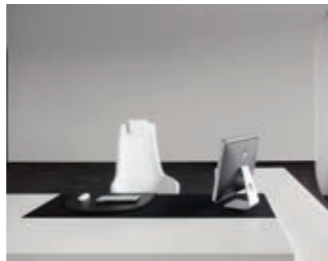


Formica® Custom Graphics® Be inspired everyday

Transform your inspirational concepts/artworks into reality with Formica® Custom Graphics® laminates.

Be it logos, photographs or other illustrations, we will reproduce it on our durable and easy maintenance laminates. Choose to have a one-off production or in larger runs, we will help you communicate your ideas, feelings or messages the way you want it.

From furniture, table tops, doors, walls, signs or the corporate environment, don't limit your imagination!



Formica Infiniti™

The next generation of surfacing
Visually striking at first glance, but with state-of-the-art functionality and surprisingly little maintenance required – that is just the beginning with Formica Infiniti™, a game changer in surfacing.

As beautiful as it is durable, Formica Infiniti™ surfacing features a soft-to-the-touch super matte finish, resists fingerprints and bacterial growth, and has thermal healing capabilities.



Formica® Protec+™ A cleaner and safer environment built to last

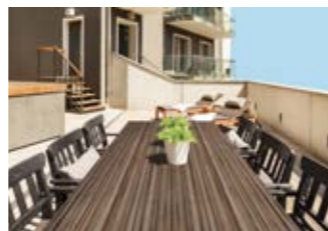
Formica® and BioCote® have collaborated to present Formica® Protec+™, a high performance premium laminate product with an additional layer of hygienic protection to any environment through the utilization of antimicrobial properties of silver (Ag+).

Providing an effective secondary support to existing cleaning regimes in the fight against contamination in all environments, Formica® Protec+™ will continuously contribute to keeping the environment more hygienic and fresher throughout the expected lifetime of the product.



Formica® VIVIX® Vertic Be the architect who envisions with the heart and creates with the mind

VIVIX® solid phenolic, engineered exterior façade panels have a decorative surface on both sides. This lightweight rainscreen cladding solution combines excellent weather and UV resistance properties for enhanced durability and ease of maintenance.



Formica® VIVIX® Horiz Bring creativity outdoors

Bundled with excellent weatherability, UV resistance and high scratch resistance properties, VIVIX® HORIZ is a suitable exterior horizontal grade material which serves as a design solution that bridges the seamless indoor-outdoor transitional concept



Formica® CHguard™ Your professional choice

In accordance with SEFA standards, Formica® CHguard™ is packed with a new formula that surpasses industrial standards, to provide supreme performance for critical applications demanding high levels of chemical and stain resistance.

Other Products BY FORMICA ASIA



Formica® Architectural Door

is surfaced by the compact laminate in 2mm thickness for more durability and impact resistance properties. It is available in different sizes in solid colour, wood grains, patterns and custom graphics images.



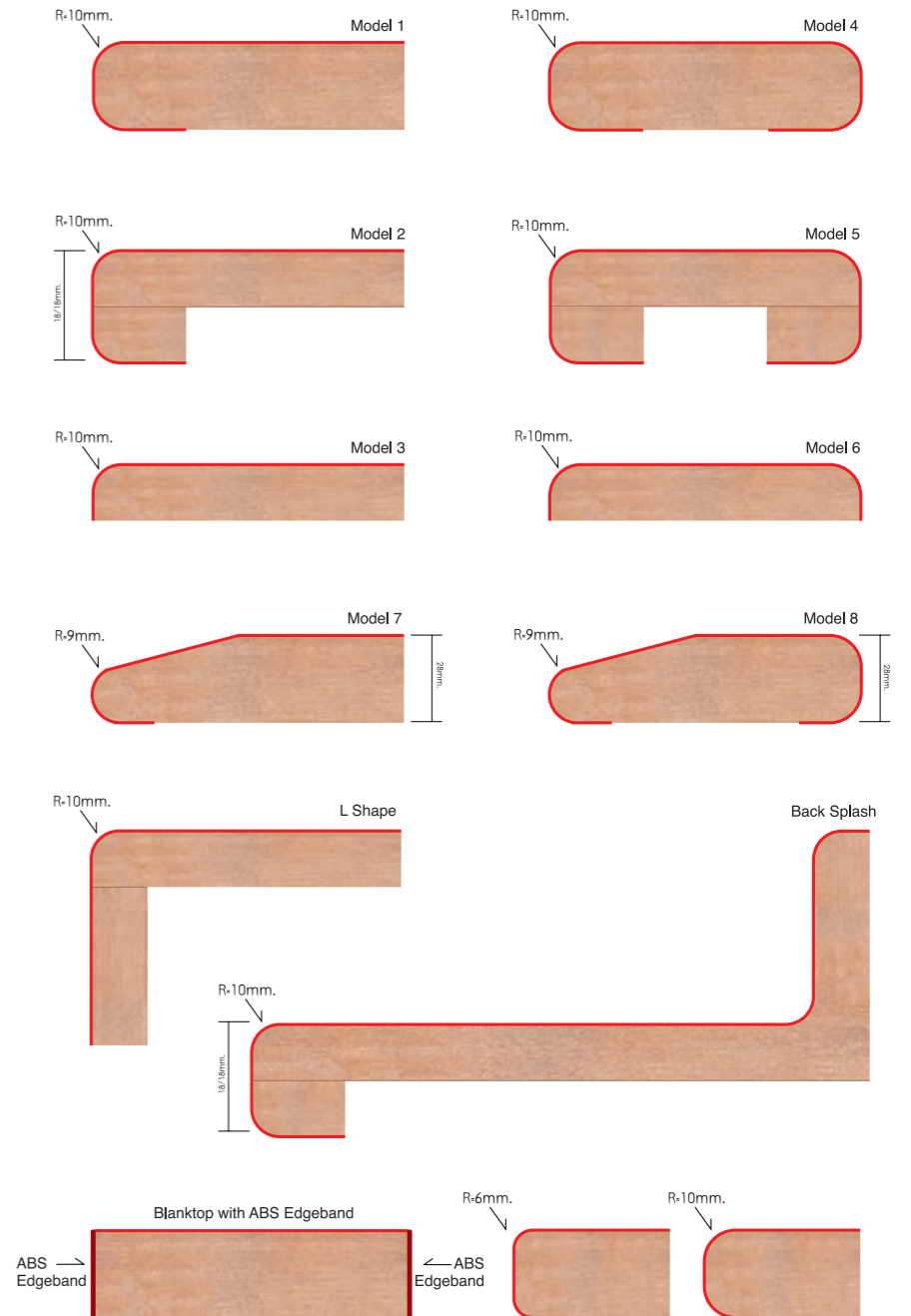
Formica® Perform Components

is highly affordable postformed components. Formica® Perform Components are surfaced in Formica® Decorative Laminate bonded onto either particle board or MDF substrates and backing paper for moisture resistance.

With distinctive structural property, Formica® Perform Components have resistance to wear, scratch, stain, moisture, impact, heat and are utilized for vertical and horizontal applications.

Formica® Perform Components

สินค้าพิเศษฟอร์มิก้า



Code	Description	Range	Finish	Edgeband	Page
0338NT	Blackened Linewood	Wood Grains	Naturelle™	-	57
0806NM	Battalon	Solid Colours	Nude Matte	DE0806UN	51
0813NT	Cuban Wood	Wood Grains	Naturelle™	-	57
0837NM	Graphite	Solid Colours	Nude Matte	-	51
2046NM	Beaujolais	Solid Colours	Nude Matte	-	51
3200EG	Ultra White	Solid Colours	Endgrain	-	51
5341EG	Wasabi	Solid Colours	Endgrain	-	51
6317HN	Weathered Cement	180fx™	Honed™	DE6317HN	54
6320NM	Black Fusion	180fx™	Nude Matte	-	54
6401NT	Natural Walnut	Wood Grains	Naturelle™	DE6401NT	57
6402NT	Thermo Walnut	Wood Grains	Naturelle™	DE6402NT	57
6410NT	Weathered Beamwood	Wood Grains	Naturelle™	DE6410NG	57
6445LM	Greige Textile	Patterns	Linum	DE6445LM	53
6446LM	Charcoal Textile	Patterns	Linum	DE6446LM	53
7928NM	Mouse	Solid Colours	Nude Matte	DE7928UN	51
7929NM	Oyster Grey	Solid Colours	Nude Matte	-	51
8006NT	Avignon Walnut	Wood Grains	Naturelle™	DE8006NT	55
8796EG	Algae	Solid Colours	Endgrain	-	51
8816SD	Frosted Champagne	Pearlescent	Brushed™	-	52
8832HN	Elemental Corten	180fx™	Honed™	-	54
8843D8	Natural Ash	Wood Grains	Drygrain	-	56
8844D8	Aged Ash	Wood Grains	Drygrain	DE8844NT	56
8845NT	Bleached Legno	Wood Grains	Naturelle™	DE8845NT	57
8848NT	Blacken Legno	Wood Grains	Naturelle™	DE8848NT	57
8857NM	Just Gold	Solid Colours	Nude Matte	-	51
8902D8	White Painted Wood	Wood Grains	Drygrain	DE8902D8	55
8910NT	Raw Birchply	Wood Grains	Naturelle™	DE8910NT	56
8913NT	Oak Fiberwood	Wood Grains	Naturelle™	-	56
9222NT	Grayed Maple	Wood Grains	Naturelle™	DE9222NT	55
9306NM	White Bardiglio	180fx™	Nude Matte	-	54
9310NM	White Marble Herringbone	180fx™	Nude Matte	-	54
9311NM	Silver Oak Herringbone	180fx™	Nude Matte	-	54
9364L	Pearl Leather	Pearlescent	Leather	-	52
9365L	Bronze Leather	Pearlescent	Leather	-	52
9366L	Smoky Shimmer Leather	Pearlescent	Leather	-	52
9435D8	Raw Blackwood	Wood Grains	Drygrain	DE9435D8	56
9436D8	Dry Blackwood	Wood Grains	Drygrain	DE9436D8	56
9437D8	Toffee Blackwood	Wood Grains	Drygrain	-	56
9439D8	Brown Blackwood	Wood Grains	Drygrain	-	56
9440NT	Nude Cherry	Wood Grains	Naturelle™	DE9440NT	55
9450NT	Powdered Cherry	Wood Grains	Naturelle™	DE9450NT	55
9451NT	Slate Cherry	Wood Grains	Naturelle™	-	55
9452NT	Antiqued Cherry	Wood Grains	Naturelle™	-	55
9484NT	Oxidized Beamwood	Wood Grains	Naturelle™	-	57
9521LM	Turquoise Raw Silk	Patterns	Linum	-	53
9524LM	Indigo Raw Silk	Patterns	Linum	-	53
9525LM	Shadow Raw Silk	Patterns	Linum	-	53
9527CK	Iced Grey	Patterns	Chalk	-	52
9528CK	Iced Blush	Patterns	Chalk	-	52
9529CK	Iced Mint	Patterns	Chalk	-	52
9532LM	Beige Plaid	Patterns	Linum	-	53
9534LM	Flannel Plaid	Patterns	Linum	-	53
9535LM	Flint Plaid	Patterns	Linum	-	53
9536LM	Menswear Plaid	Patterns	Linum	-	53

Note:

* All Wood Grain items and 180fx™ items in Honed™ finish are available in 4' x 8' and 4' x 10' sizes.

* Please check with our sales personnel on the size availability prior to purchase.

TAIWAN**Formica Taiwan Corporation****Taiwan – Taipei**

6F., No. 68-70, Section 3, Nanking East Road, Zhongshan District, Taipei City 104, Taiwan

Tel : (886-2) 2515-1017

Fax : (886-2) 2517-0542

Taiwan – Taichung

8F.-8, No. 290, Section 2, Nantun Road, Nantun District, Taichung City 408, Taiwan

Tel : (886-4) 2472-6276

Fax : (886-4) 2475-1360

Taiwan – Kaohsiung

15F.-2, No. 110, Sanduo 4th Road, Lingya District, Kaohsiung City 802, Taiwan

Tel : (886-7) 330-2365

Fax : (886-7) 330-2175

CHINA**Formica (China) Trading Co., Ltd****China – Shanghai**

903, BM InterContinental Business Center, 100 Yutong Road, Shanghai 200070, China

Tel : (86-21) 6010-2688

Fax : (86-21) 6010-2658

China – Beijing

Rm. 530, Grand Pacific Building A, No. 8 Guanghua Road, Chaoyang District, Beijing 100026, China

Tel : (86-10) 6581-7717

Fax : (86-10) 6581-6733

China – Guangzhou

Rm. 1209, Jie Tai Plaza, No. 218-222 Zhongshan 6 Road, Yuexiu District, Guangzhou 510180, China

Tel : (86-20) 8132-0258

Fax : (86-20) 8132-0033

China – Dongguan

Rm. 1109, 11/F, B&Q Center Block A, No. 200 Hongfu Road, Nan Cheng District, Dongguan 523073, China

Tel : (86-769) 2270-2216

Fax : (86-769) 2278-1770

China – Shenzhen

Rm. 803, Excellence Building, No.98 Fuhua 1 Road, Futian District, Shenzhen 518033, China

Tel : (86-755) 8287-4880

Fax : (86-755) 8287-4881

China – Chengdu

Rm. 1412, Huamin Empire Plaza, No.1 Fuxing Street, Jinjiang District, Chengdu 610016, China

Tel : (86-28) 8670-3160

Fax : (86-28) 8670-3180

HONG KONG**Formica (Asia) Limited**

Room 1305-9, 13/F., Olympia Plaza, 255 King's Road, North Point, Hong Kong

Tel : (852) 2598-0117

Fax : (852) 2598-6577

THAILAND**Formica (Thailand) Co. Ltd.**

51/27 Moo 2 Poochaosamingprai Road, Bangyaparak, Phrapradaeng, Samutprakarn, 10130 Thailand

Tel : (66-2) 701-9600

Fax : (66-2) 384-7537

Thailand Sales Office

216/63-64 L.P.N. Tower, 15th Floor

Nanglinchee Road, Chongnonsee,

Yannawa, Bangkok 10120 Thailand

Tel : (66-2) 285-4473 | (66-2) 285-4474

Fax : (66-2) 285-2899

SINGAPORE**Formica (Singapore) Pte. Ltd.**

No. 502/502A, Sims Avenue Singapore 387567

Tel : (65) 6514-1313

Fax : (65) 6846-7030

MALAYSIA**Formica (Malaysia) Sdn. Bhd.**

B-10-3A, Level 10, Menara Bata, PJ Trade Centre, No. 8, Jalan PJU 8/8A, Bandar Damansara Perdana

47820 Petaling Jaya, Selangor D.E, Malaysia

Tel : (60-3) 7710-0512

Fax : (60-3) 7727-0510

INDONESIA**Sales Representative Office**

Mayapada Tower 2, 6th Floor, Suite 04

Jl. Jend Sudirman Kav.27, Jakarta 12920, Indonesia

Tel : (62-21) 2500-771

Fax : (62-21) 2500-772

PHILIPPINES**Sales Representative Office**

Unit 1401 14th Floor, MDI Corporate Center,

10th Avenue Corner 39th Street,

Bonifacio Global City, Taguig, Philippines

Tel : (632) 553-9996

Fax : (632) 856-0407

VIETNAM**Sales Representative Office**

Level 3, 414 Nguyen Thi Minh Khai Street,

District 3, Ho Chi Minh City, Vietnam

Tel : (84-28) 3832 6128

Fax : (84-28) 3832 6129

FORMICA FOR MORE, FORMICA FOR ME